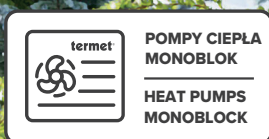
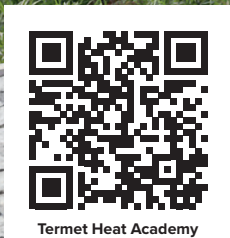


Warmth of nature



**termet®**



HYDRAULIC MODULE WITH  
INTEGRATED STORAGE TANK  
FOR MONOBLOCK HEAT PUMPS

## T-BLOCK T-BLOCK PRO

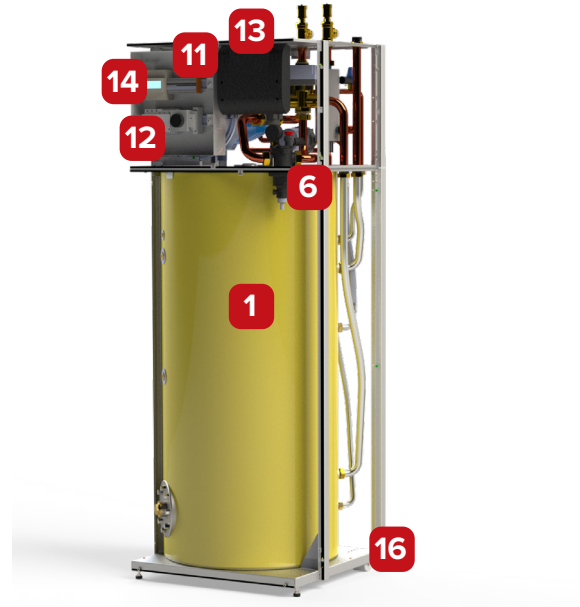
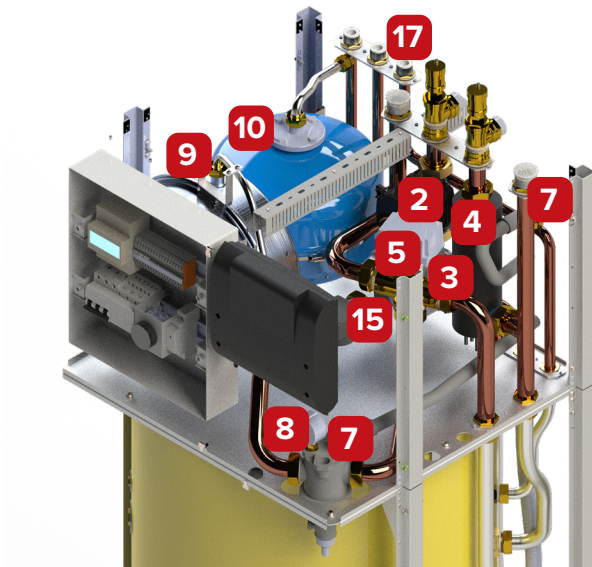
Packaged sets based on  
hydraulic modules and heat pumps:

- Termet Heat Gold 6, 9, 12
- Termet Heat Platinum 8, 13

T-BLOCK is a modern hydraulic module for central heating and hot water designed to work with a monoblock heat pump. With its integrated 182-litre storage tank, it is a complete solution that can be used in almost any building, both new and retrofitted. The placement of the components in an elegant casing makes the unit blend in perfectly with any interior.

- Corrosion- and moisture-resistant housing;
- Space-saving - no need for a classic boiler room;
- It significantly simplifies and shortens installation time and reduces the possibility of installation errors;
- Installer-friendly design thanks to easy access to all components;
- Top-quality components, which contributes to the device's long service life;
- Available in several configurations to suit the requirements of almost any installation;
- Control of 3 heating circuits possible (version with HP Multi regulator);
- Peak source in the form of a 6 kW (2+2+2) 3-phase electric heater;
- Protection of the storage tank against corrosion through a magnesium anode;
- Numerous overpressure protection devices, including expansion vessels for central heating and hot water, a safety valve for central heating with an opening pressure of 3 bar, and a safety valve for hot water with an opening pressure of 6 bar.

## TECHNICAL AND FUNCTIONAL ADVANTAGES



1. **182 litre DHW tank** with a 2.53 m<sup>2</sup> double-coiled coil to provide a large heat exchange surface and proper heat extraction from the heat pump
2. **central heating circulation pump**
3. **DHW circulation pump**
4. **an electric heater** as a peak source of heating to ensure thermal comfort even in the coldest weather
5. **three-way diverter valve** - KVS flow rate 8.4 m<sup>3</sup>/h
6. **magnetic filter** - protects the heat pump and the system from impurities
7. **vent**
8. **Pressure gauge** for convenient pressure control
9. **expansion vessel for the central heating system** to protect the central heating system against pressure increase
10. **DHW expansion vessel** to protect the DHW system against pressure increase
11. **electrical terminal block**
12. **safety devices**
13. **HP Multi control** (applies to T-Block version with control) - only available in combination with Termet Heat pump
14. **electricity meter** (applies to T-Block PRO version)
15. **flow meter** (applies to T-Block PRO version)
16. **rollers** for easy movement
17. **Water connections available at the top of the T-Block:**
  - supply from heat pump **GZ1"**
  - return to heat pump **GZ1"**
  - buffer supply **GZ1"**
  - return from the buffer tank **GZ1"**
  - cold water inlet **GZ<sup>3</sup>/<sub>4</sub>"**
  - hot water outlet **GZ<sup>3</sup>/<sub>4</sub>"**
  - hot water circulation inlet **GZ<sup>3</sup>/<sub>4</sub>"**

## TECHNICAL SPECIFICATIONS

Parameter	Unit	Termet T-BLOCK 13 PG (HP) (PRO)
<b>Hydraulic parameters</b>		
Capacity of the built-in hot water tank.	l	182
Maximum operating pressure of central heating / Maximum operating pressure of hot water.	bar	3 / 6
Minimum heating medium temperature	°C	8
Maximum heating medium temperature	°C	95
Central heating expansion vessel.	l	12
Domestic hot water expansion vessel.	l	12
Heating medium	-	Water/glycol solutions up to 35%
<b>Electrical parameters</b>		
Maximum electrical power consumption (version G with heater)	kW	6,5
Supply voltage	-	~400V/3 phases/50 Hz
IP	-	IP X4D
<b>Dimensions</b>		
Dimensions [L x W x H] without connectors	mm	600 x 650 x 1753