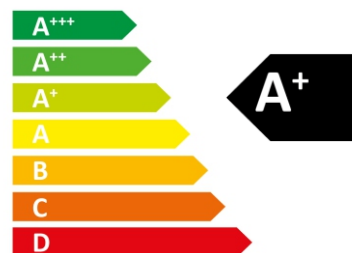




+



=



# GAS CONDENSING BOILERS

## ECOCONDENS INTEGRA II PLUS

### combi boilers

ECOCONDENS INTEGRA II PLUS 20

ECOCONDENS INTEGRA II PLUS 25



**MOBILE APP  
COMFORT  
SYSTEM**

- Energy saving
- Convenience
- Full remote control of the heating system
- Controllable from anywhere in the world



**MOBILE APP  
SERVICE  
SYSTEM**

- Remote monitoring of the device
- Quick device configuration via mobile/tablet
- Full device diagnostics

# ECOCONDENS INTEGRA II PLUS

ECOCONDENS INTEGRA II PLUS is a modern, wall mounted gas condensing boiler with an integrated 48-litre storage tank. Complete heating unit in compact casing; reliable in preparation of hot water thanks to a very efficient storage tank. Very easy access to the compensation vessel for CH and DHW directly after removing the cover. A 48-litre storage tank ensures that hot water is immediately available after turning on the tap. In addition the high heat output of the tank coil provides instantaneous water heating in the storage tank.

## TECHNICAL FEATURES

### COMBI BOILERS:

ECOCONDENS INTEGRA II PLUS 20 power: 3,0-22,0 kW (50/30°C)

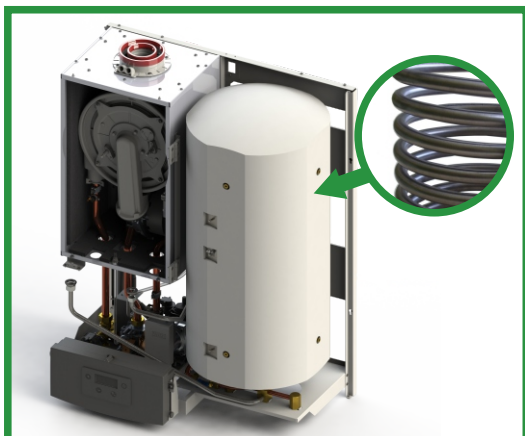
ECOCONDENS INTEGRA II PLUS 25 power: 4,3-26,5 kW (50/30°C)

### C.H.

### D.H.W.

power: 2,7-25,0 kW (80/60°C)

power: 3,9-30,0 kW (80/60°C)



### D.H.W. SYSTEM:

High comfort of d.h.w. at  $\Delta t$  30°C:

- 12,4 l/min ECOCONDENS INTEGRA II PLUS 20
- 13,1 l/min ECOCONDENS INTEGRA II PLUS 25

- condensing boiler with integrated 48 l hot water tank made of stainless steel INOX
- modulating pump (PWM signal) with automatic air vent
- modulation range: 13%-100%
- modulating fan
- low level of NOx emission (NOx-6 class)
- weather regulation available
- **OPEN-THERM system available**
- **0-10V system available**
- modern control panel with electronic display
- very quiet operation
- anti-legionella function (automatic/manual)
- LIN (Local Interconnect Network) with mobile applications for service (Service Version) and for end-user (Comfort Version)

| PARAMETERS  |                 | COMBI BOILERS   |          |
|---|-----------------|---|----------|
|   |                 | 20  | 25       |
| <b>C.H. CIRCUIT</b>   |                 |   |          |
| Seasonal space heating energy efficiency class                                |                 | A   |          |
| Rated heat output   | $P_{rated}$ kW  | 20  | 24       |
| Seasonal space heating energy efficiency                                      | $\eta_s$ %      | 95  | 93       |
| Annual energy consumption   | $Q_{HE}$ GJ     | 40,8  | 48,4     |
| Boiler thermal power at 50/30°C   | kW              | 3,0-22,0  | 4,3-26,5 |
| Max water pressure in C.H. circuit  | bar             | 3   |          |
| Boiler efficiency at partial load and return water temperature 30°C           | %               | ~109  |          |
| Capacity of expansion vessel  | dm <sup>3</sup> | 6   |          |
| <b>D.H.W. CIRCUIT</b>   |                 |   |          |
| Seasonal water heating energy efficiency class                                |                 | A   | A        |
| Declared load profile   |                 | L   | L        |
| Water heating energy efficiency   | $\eta_{wh}$ %   | 75  | 75       |
| Boiler thermal power at 80/60°C   | kW              | 2,7-25,0  | 3,9-30,0 |
| <b>HYDRAULIC AND ELECTRIC PARAMETERS, ENVIROMENTAL PROTECTION, DIMENSIONS</b> |                 |   |          |
| Annual fuel consumption   | $AFC$ GJ        | 13  | 13       |
| Sound power level   | $L_{wa}$ dB     | 44  | 46       |
| Chimney connection  | mm              | concentric Ø80/Ø125, Ø60/Ø100 or 2 single Ø80 by using TWIN adapter |          |
| Voltage   | V               | ~230  |          |
| Nox emission (2H-G20)   | class           | 6   |          |
| Dimensions  | mm              | 690x410x937   |          |
| Storage tank capacity   | dm <sup>3</sup> | 48,0  | 48,0     |
| Net weight  | kg              | 64,0  | 66,0     |

## HEAT EXCHANGER

- modern heat exchanger
- outer casing made of aluminium
- single coil of heat exchanger made of stainless steel
- ensures constant water flow over a long lifecycle
- reduces debris accumulation

## REMOTE CONTROLLERS - 6TH ENERGY EFFICIENCY CLASS \*)

### WEEKLY PROGRAMMABLE wireless smart system



System Comfort

### WEEKLY PROGRAMMABLE room temperature regulator OPEN-THERM



termet ST-2801 Wi-Fi  
termet ST-2801

### WEEKLY PROGRAMMABLE room temperature regulator



Easy Remote

**termet** Poland, 58-160 Świebodzice, Długa 13  
Export Department tel. +48 74 856 06 75  
export@termet.com.pl

[www.termet.com.pl](http://www.termet.com.pl)

[www.facebook.com/termetpl/](https://www.facebook.com/termetpl/)

\*) Boiler achieves A+ energy efficiency class in cooperation with 6th energy efficiency class remote controllers