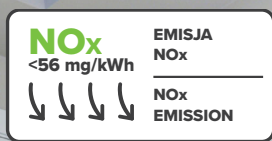


Warmth of nature

**termet**<sup>®</sup>



Ecological, gas water heaters  
with an open combustion chamber

## TERMAQ ELECTRONIC ECO TERMAQ AQUA POWER ECO

Gas instantaneous water heaters are modern devices that ensure high comfort of hot water. They are characterized by high efficiency, long life, simple and intuitive operation, and a number of protections ensure safe use. Thanks to the innovative design of the water-cooled burner, the heaters meet the stringent requirements of the ErP Directive (nitrogen oxide emissions below 56 mg/kWh). These devices are therefore not only ecological, but also economical. Attractive design makes them a decoration of the most modern interiors.



**European  
Funds**  
Smart Growth

**European Union**  
European Regional  
Development Fund

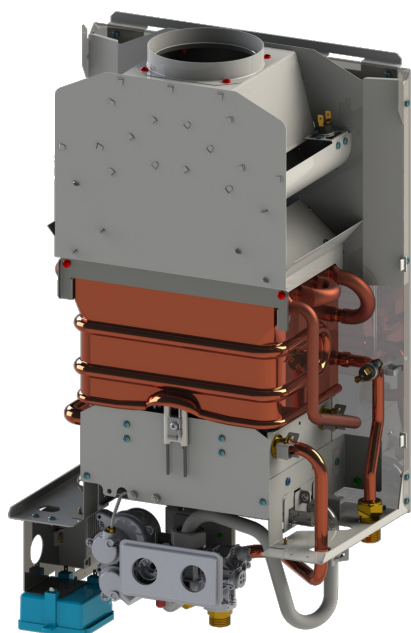


Creation of low-emission gas water heaters - project  
implemented with support from European Funds under  
the Smart Growth Programme.



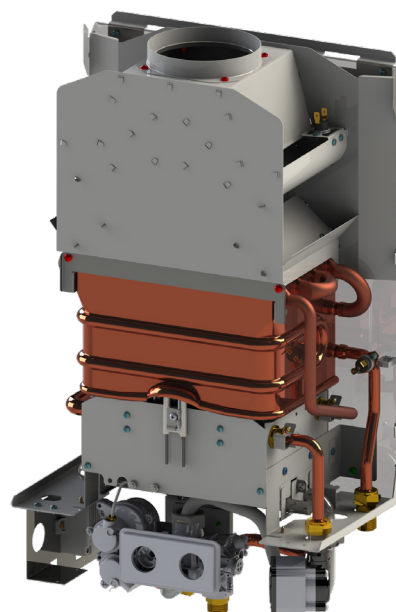
[www.termet.com.pl](http://www.termet.com.pl)

## TECHNICAL FEATURES



**TERMAQ ELECTRONIC ECO**  
battery electronic ignition

- **open combustion chamber**
- innovative water-cooled burner which ensures low emission of CO and NOx in accordance with ErP (NOx ≤ 56 mg/kWh)
- smooth automatic power regulation depending on water flow rate
- water heating energy efficiency class: A
- low water flow activating the device (about 3,2 dm<sup>3</sup>/min)
- complete system of protection: against lack of chimney draught, against flue gas discharge into the room
- modern design ensures long-lasting, economic and failure-free operation
- no pilot flame, which results in lower gas consumption and savings for the user



**TERMAQ AQUA POWER ECO**  
electronic ignition from the hydro-generator

## TECHNICAL DATA

TECHNICAL FEATURES	TERMAQ ELECTRONIC ECO		TERMAQ AQUA POWER ECO
	GE-19-02	GE-24-02	GH-19-02
Ignition	electronic from batteries	electronic from batteries	electronic from hydro-generator
Heating power	8,0-19,2 kW	9,1-24,0 kW	8,0-19,2 kW
Thermal efficiency for nominal power	88%	88%	88%
Water heating energy efficiency class	A	A	A
Declared load profile	M	L	M
Water heating energy efficiency [ $\eta_{wh}$ ]	79 %	75%	79 %
Annual fuel consumption AFC	6 GJ	13 GJ	6 GJ
Working water pressure	0,2-10,0 bar	0,2-10,0 bar	0,2-10,0 bar
Hot water flow ( $\Delta t \leq 50^\circ\text{C}$ )	3,2-5,7 l/min	3,6-7,0 l/min	3,2-5,7 l/min
Warm water flow ( $\Delta t \leq 25^\circ\text{C}$ )	5,7-11,5 l/min	7,0-14,0 l/min	5,7-11,5 l/min
Max. outlet water temperature	65 °C	65 °C	65 °C
Sound power level $L_{wa}$	53 dB	60 dB	53 dB
Connection to chimney duct	117 mm (114 mm option)	132 mm	117 mm (114 mm option)
Gas connection	G 3/4 (G 1/2 option)	G 3/4 (G 1/2 option)	G 3/4 (G 1/2 option)
Cold water connection	G 1/2	G 1/2	G 1/2
Hot water connection	G 1/2	G 1/2	G 1/2
Height x width x depth	590x360x230 mm	590x360x230 mm	590x360x230 mm
Weight	10,7 kg	12,1 kg	10,7 kg

## WATER HEATERS WITH OPEN COMBUSTION CHAMBER ARE AVAILABLE FOR THE FOLLOWING TYPES OF GAS

Catalogue number	Gas type	Trade name	Catalogue number	Gas type	Trade name
WGE 3723 00 00 00/EU1T	2H-G20 20mbar	TERMAQ ELECTRONIC ECO	WGE 3733 00 00 00/EU1X	2H-G20	TERMAQ ELECTRONIC ECO
WGE 3724 00 00 00/EU1T	3P-G31 37mbar 3B-G30 28-30mbar 3B/P-G30 30mbar 3+G30/G31 28-30/37mbar	GE-19-02	WGE 3734 00 00 00/EU1X	3P-G31 37mbar	GE-24-02
WGE 3725 00 00 00/EU1T	3B/P-G30 37mbar		WGE 3735 00 00 00/EU1X	3B/P-G30 37mbar	
WGE 3726 00 00 00/EU1T	3B-G30 50mbar 3B/P-G30 50mbar		WGE 3736 00 00 00/EU1X	3B-G30 50mbar 3B/P-G30 50mbar	
WGE 3727 00 00 00/EU1T	3P-G31 50mbar		WGE 3737 00 00 00/EU1X	3P-G31 50mbar	
WGE 3729 00 00 00/EU1T	2H-G20 25mbar		WGE 3738 00 00 00/EU1X	3B-G30 28-30mbar 3B/P-G30 30mbar 3+G30/G31 28-30/37mbar	
			WGH 3923 00 00 00/EU1T	2H-G20 20mbar	TERMAQ AQUA-POWER ECO typ GH-19-02
			WGH 3924 00 00 00/EU1T	3P-G31 37mbar 3B-G30 28-30mbar 3B/P-G30 30mbar 3+G30/G31 28-30/37mbar	
			WGH 3925 00 00 00/EU1T	3B/P-G30 37mbar	
			WGH 3926 00 00 00/EU1T	3B-G30 50mbar 3B/P-G30 50mbar	
			WGH 3927 00 00 00/EU1T	3P-G31 50mbar	
			WGH 3929 00 00 00/EU1T	2H-G20 25mbar	

**termet®**

Termet S.A. ul. Długa 13, 58-160 Świebodzice  
T: +48 74 85 60 801 E: export@termet.com.pl

[www.termet.com.pl](http://www.termet.com.pl)